

Revolutionise TEC Training with the Virtual Home: Where Innovation Meets Real-World Application



The voice of technology
enabled care

Experience the future
of training today



The Virtual Home by TSA is your gateway to cutting-edge, real-world simulation training, meticulously crafted to boost expertise and confidence in prescribing technology-enabled care (TEC).

Step into a lifelike digital environment where your workforce can master the skills that empower them to make a real difference. With the Virtual Home, they don't just learn—they transform lives. Tailored to your exact requirements, the Virtual Home adapts to your needs, ensuring your team receives the most relevant and impactful training available. Whether you're addressing unique challenges or scaling new heights, we've got you covered.

FIND OUT MORE: email workforce@tsa-voice.org.uk or call 01625 520 320

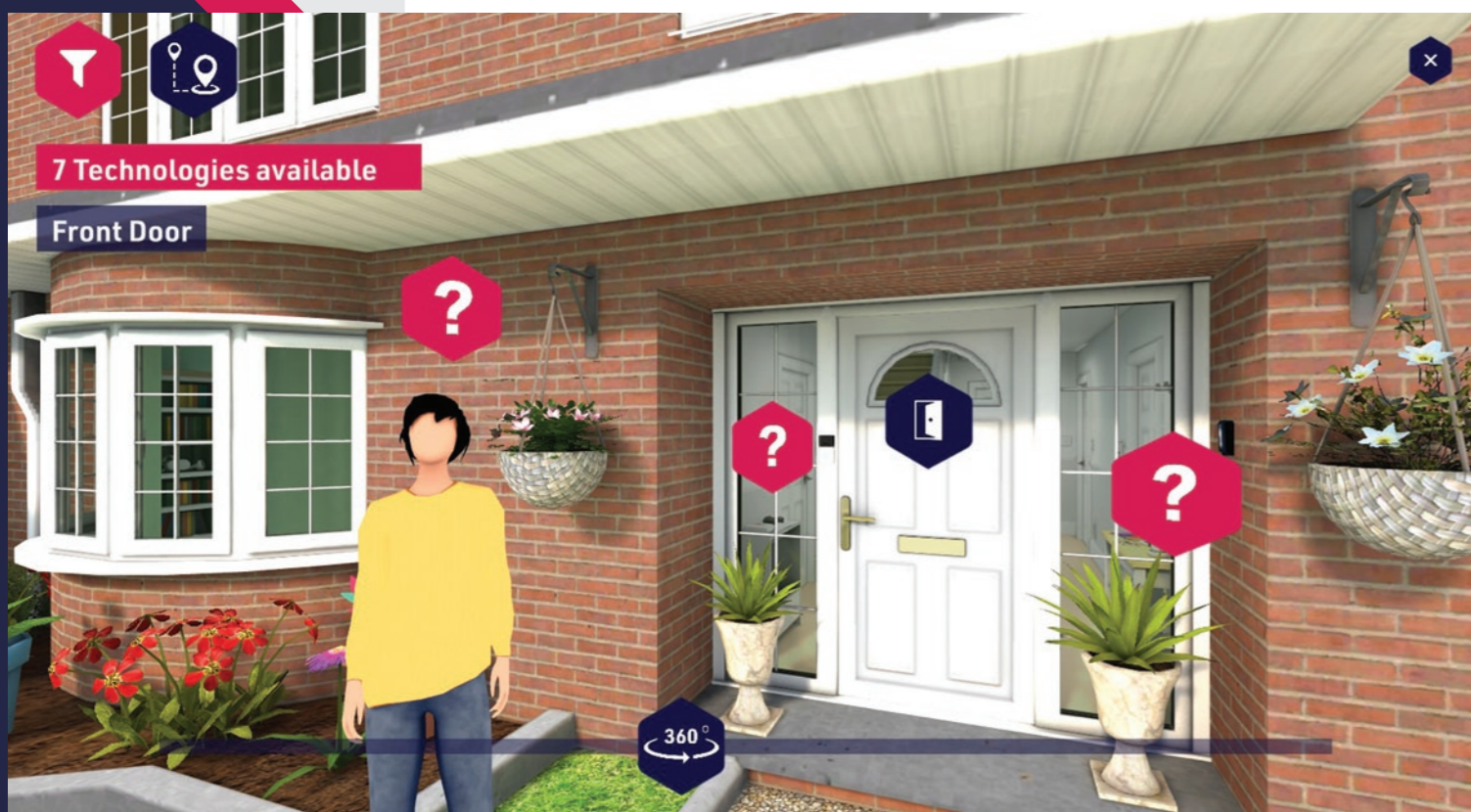
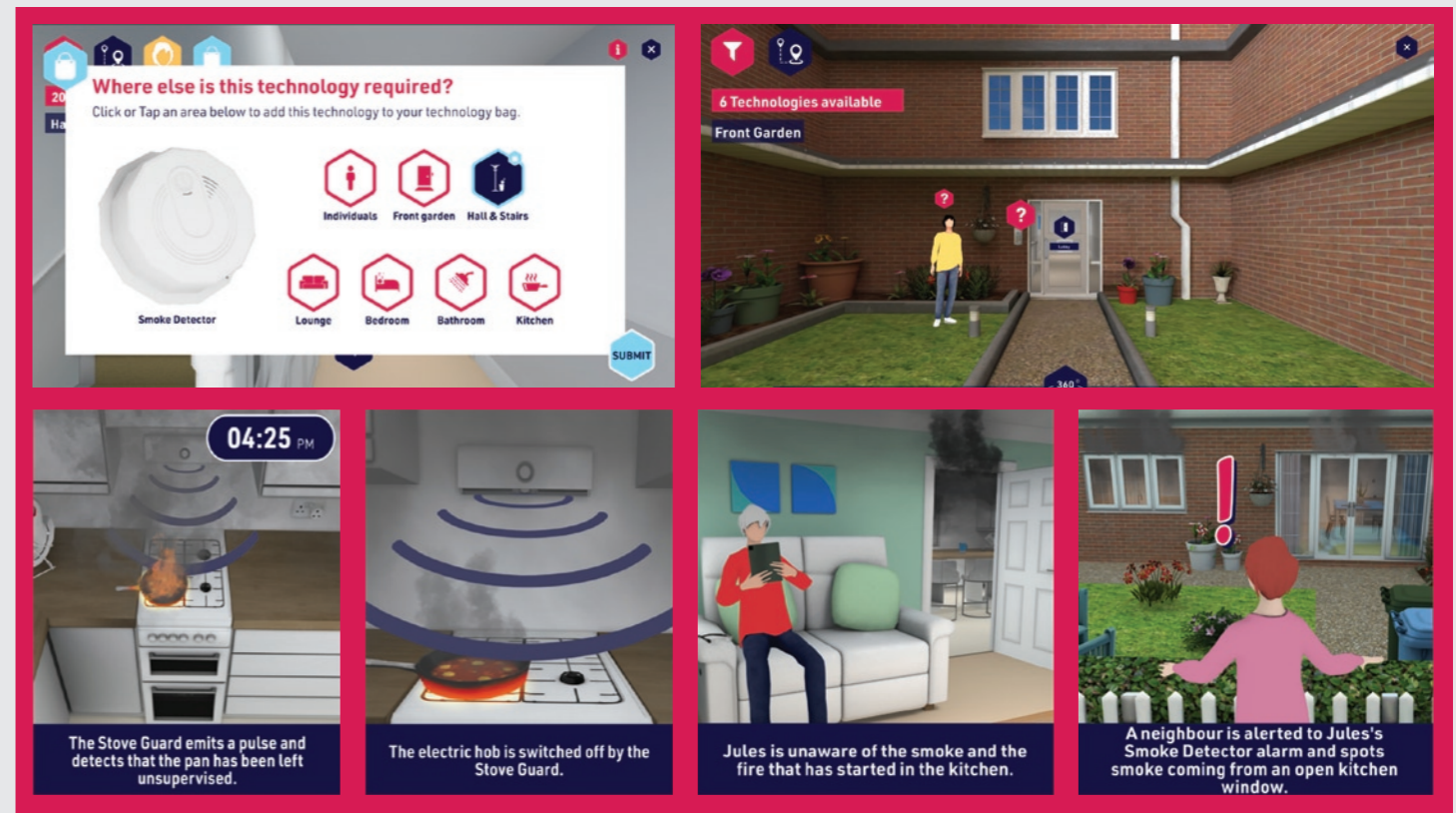
Comprehensive Assessment Tools

Our resource suite includes an advanced assessment tool, available in both English and Welsh. This tool simplifies TEC assessments while promoting a user-centric, inclusive, and legally compliant approach, ultimately enhancing care outcomes and user satisfaction.



Extensive Reach and Impact

- Join the 6,000+ users across the UK who have already harnessed the power of the Virtual Home. See firsthand how our solution drives measurable success.
- E-learning modules with scenario-based learning support staff across health, care, and housing sectors.
- Examples of local authorities seeing sustained increases of over 30% in quality referrals into TEC services following the application of the Virtual Home solution.



Your Pathway to Mastery: From TEC Explorer to TEC Expert



TEC EXPLORER

Begin with the TEC Explorer level, an introduction to Technology-Enabled Care. This course demystifies jargon and demonstrates how technology can enhance safety and independence at home. Through short courses and curated content, learners will understand various technologies and solutions, learning how to manage needs and risks effectively. Successful completion awards the TEC Explorer digital badge.

TEC EXPERT

Advance to the TEC Expert level for an in-depth exploration of using technology to enhance independence and wellbeing. This course covers ethics, safeguarding, informed consent, and the limitations of technology. Learners will understand accountability and the importance of continually reviewing solutions to ensure they meet individual needs. Completion awards the TEC Expert digital badge.

The Virtual Home - A Preview

Explore our Virtual Property Portfolio with the video walkthrough on our website. With multiple styles of property to ensure realistic and bespoke training, see how this simulation tool can elevate your training programme. Visit: <https://www.tsa-voice.org.uk/tsa-training-service/the-virtual-home/>





What Our Learners Say

"The Virtual Home has redefined our training approach. The hands-on scenarios are invaluable, and our team is now more confident and skilled in TEC than ever before."

"Since implementing the Virtual Home, we've seen a marked improvement in the quality of our referrals and a deeper understanding of TEC among our staff."

Affordable Licensing

Unlock exclusive access to the Virtual Home with our affordable annual licensing. Don't miss out on this cost-effective opportunity to revolutionise your training programme. Contact us for further details.

Get in Touch

Ready to elevate your TEC training?
Contact us today to explore how the Virtual Home can transform your workforce.
Email us at: workforce@tsa-voice.org.uk
or call 01625 520 320.

Your journey to mastery starts here.

