

Transforming Knowledge into Action – Playing our Part

19th March 2024

Vic Rayner
CEO
National Care Forum

What is the National Care Forum?



Data

- * Safe collection and use of data (cyber security and data management)
- * Data collection, extraction and flow—need to ensure two way and benefits care providers
- * Using data (care planning, business planning)
- * AI (for better care, for business)



Skills

- * Upskilling across the workforce
- * Need for Care Worker Digital Foundation Skills
- * Digital Leadership Skills and CPD
- * Which skills could be brought in on fractional basis?



Technology

- * Understand benefits to the individual
- * Understand the benefits to the organisation
- * Ambition and aspiration of individuals
- * How do we support the design, development and adoption of T.E.C ?
- * Key principles – co-production, rights and control
- * What is already out there? ROBOTICS



The Future Of Care

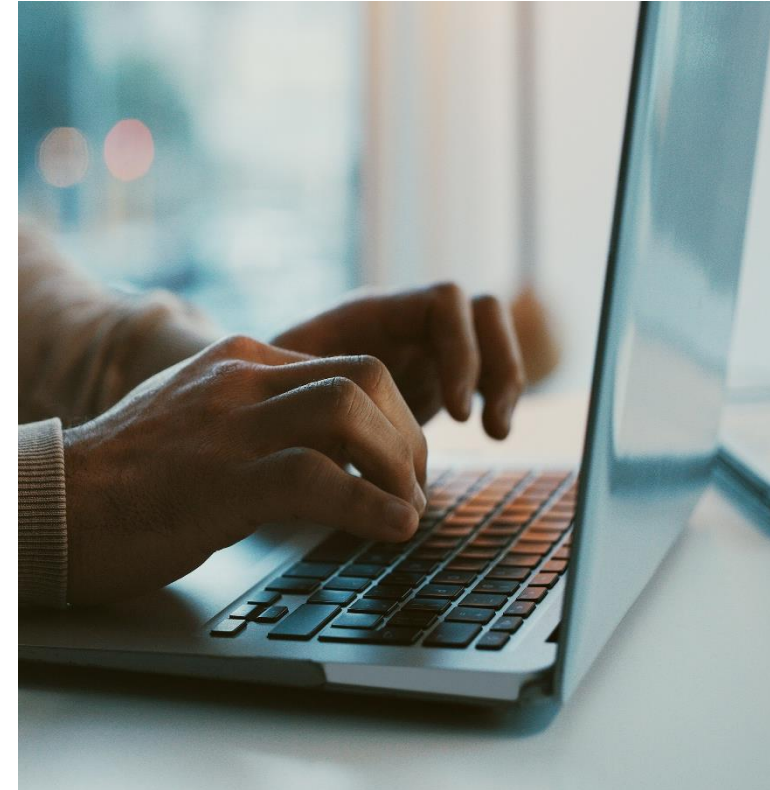
- * What will/could care look like in 2030?
- * Horizon thinking –
 - * Hybrid Care –
 - * Ambition and aspiration of individuals
- * How do we support the design, development and adoption of T.E.C ?
- * Key principles – co-production, rights and control
- * What is already out there?
- * NCF Care Innovation Challenge – showcase and support the horizon thinking



DHSC digital ambitions for social care – a reminder

DHSC has several aims in terms of digitisation of ASC, including:

- 80% of CQC registered care providers using digital social care records, able to connect to shared care records by March 2025. Each ICS to have single health and care records in place.
- Falls prevention – over 20% of care home will have acoustic monitoring or equivalent tech solutions in place.
- Exploration of other care tech to promote independence – Adult Social Care Technology Fund backing this.
- Creation of minimum data set for social care.



Building a data set for social care:

Government publishes responses to Care Data Matters

In December, on the back of their February 2023 consultation. The Gov published their revised social care data strategy

Care Data Matters – set out the government’s vision for social care data

- Sets out roadmap for improving the way they collect, share & analyse data
- Explains current data landscape, the gaps & opportunities to plug them
- Looks at improving data access to produce better insights
- Focus on driving sector digitisation, to streamline data flows including through the adoption of digital social care records



The responsible use of generative AI in Social Care – starting to scope a co-produced framework and guidance

- ✓ Artificial Intelligence ('AI') offers many opportunities and potential benefits to adult social care.
- ✓ Generative AI, such as Large Language Models (LLMs) that power AI chatbots, can aid with various tasks in social care.
- ✓ BUT.....many activities in social care directly touch on peoples' human rights and wellbeing.
- ✓ Currently, there are no guidelines for people using social care services, care providers including family carers, tech developers or organisations integrating AI chatbots into their services, commissioners etc. on what responsible use of generative AI in social care entails.

As a sector, we need to co-produce actional guidelines for appropriate usage and deployment of generative AI in social care.

[Oxford Statement on the responsible use of generative AI in Adult Social Care | Ethics in AI](#)

Oxford Statement on the responsible use of generative AI in Adult Social Care



Logos Showcasing Organisations endorsing the results of the round table

On the 1st of February 2024, representatives of thirty organisations and individuals working in Adult Social Care met at the University of Oxford, Reuben College, to discuss the benefits and risks of using 'generative AI' in social care.

This was the first of a series of 'AI in adult social care' roundtable events to take place as part of a co-production initiative for people in adult social care organised by [Dr Caroline Green at the University of Oxford Institute for Ethics in AI](#), Reuben College, [the Digital Care Hub](#) and Casson Consulting.



KEEP IN TOUCH!

Twitter: @vicrayner @NCFCareForum

Email: vic.rayner@nationalcareforum.org.uk

Website: www.nationalcareforum.org.uk