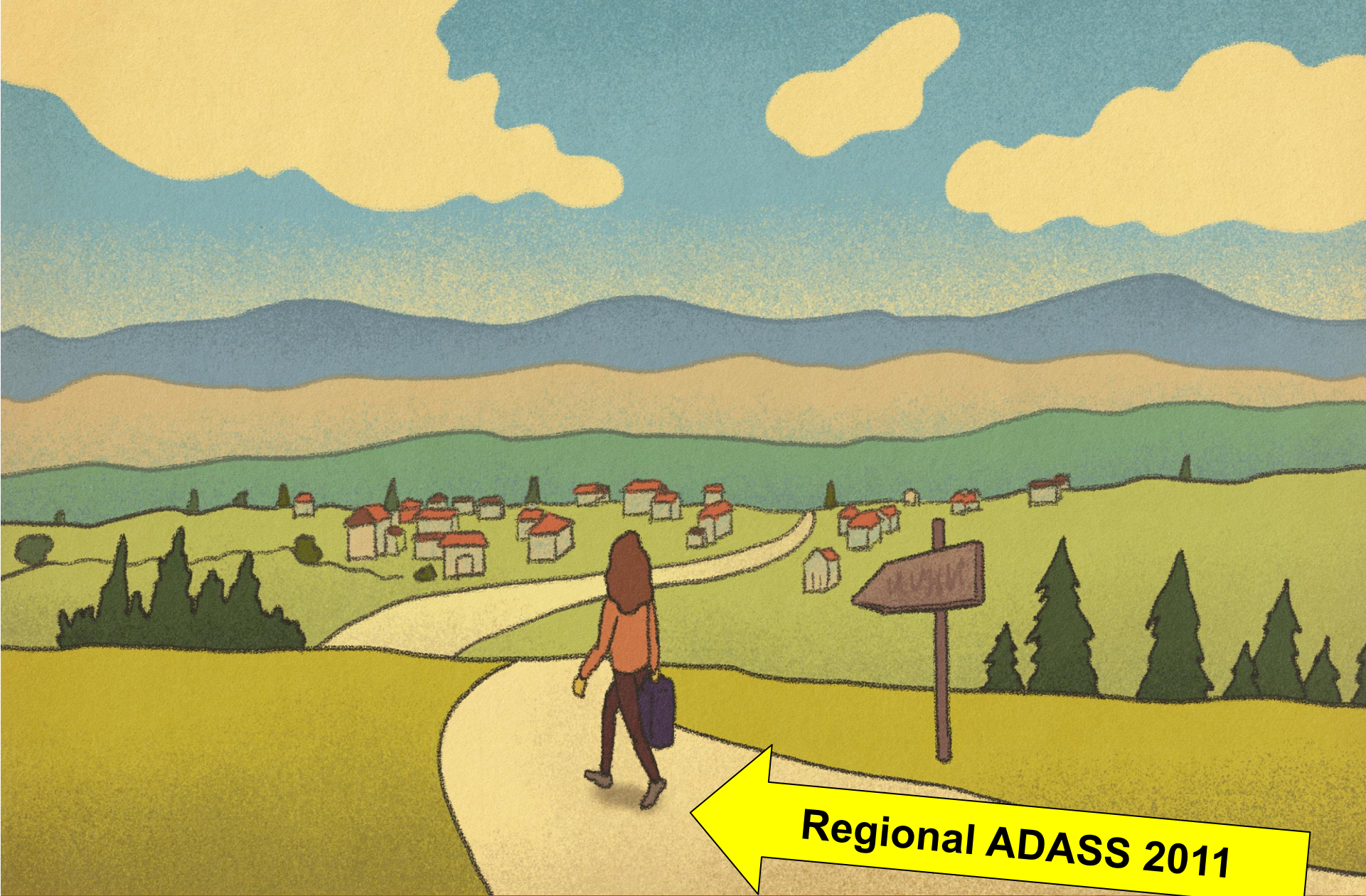


TEC

Evidencing The Benefits

Mark Douglas
Technology Enabled Care Manager
Nottinghamshire County Council





Regional ADASS 2011



Service Context - Nottinghamshire



2300 TEC Referrals Per Annum



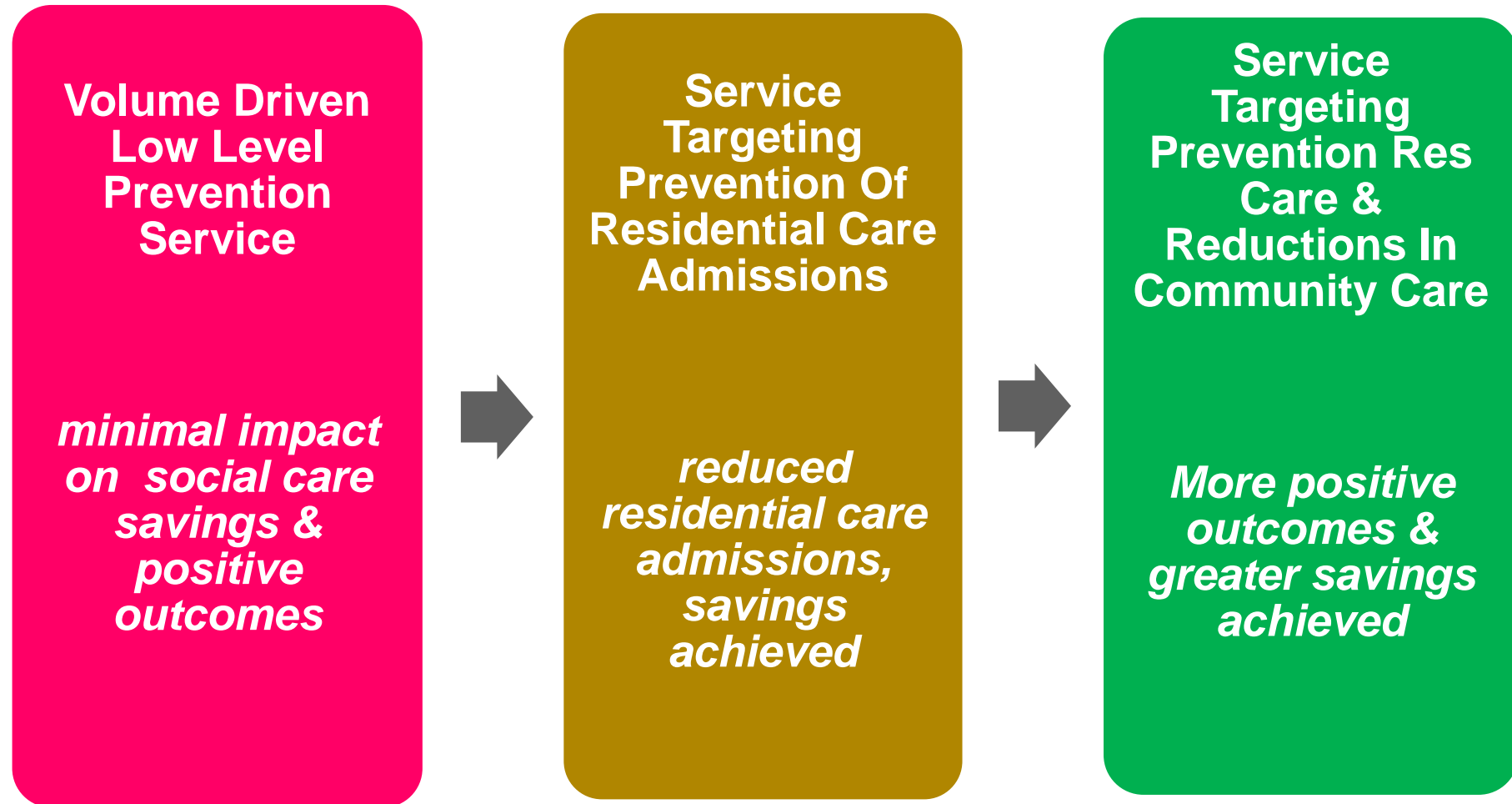
Combination Of Telecare, Activity Monitoring, TEC For Carers, Daily Living Reminder TEC & Tablet Computer/Data Loan Service



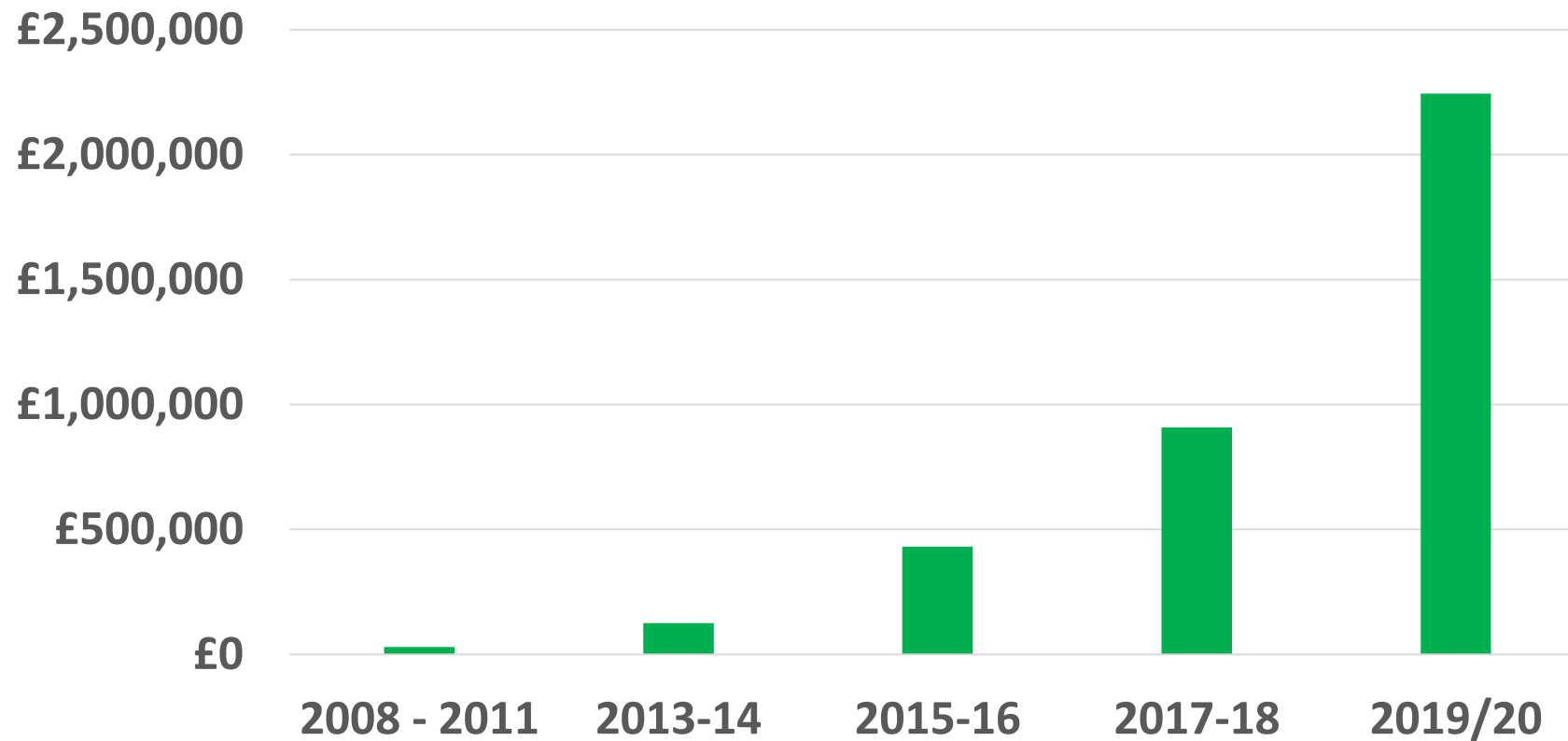
Contracted Out Managed Service Model



NCC TEC Journey



Annual Social Care TEC Savings



Required To Maintain £2.175m Of Efficiencies From New Referrals Each Year Since



Savings Method

RESIDENTIAL CARE AVOIDANCE SAVINGS

- All Referrals Risk Rated For Likelihood Of Res Care Admission – Only Count Cases Rated High & Immediate
- Net Average Figure Used For Cost Of Res Care – Different Figures For Older & Younger Adults
- Business Intelligence Hub Automatically Tracks Actual Costs Of Community Care, Incl Charging Income
- Savings: Res Care Minus Comm Care Actuals (1Yr Max)
- ‘Negative’ Savings Are Included In Total



Savings Method

COMMUNITY CARE AVOIDANCE SAVINGS

- **All Referrals Record If TEC Will Avoid Care Costs**
- **Estimated Number Of Hours Per Week Saved Is Recorded – Capped At 14 Hours A Week Maximum**
- **Net Average Hourly Home Care Rate Used**
- **Savings Counted For Up To 1 Year Maximum Or When TEC Ends**



Impact On Outcomes: 2023-24

TEC Customer Survey 2023

- 82% felt more independent
- 69% said TEC made an admission to residential care or hospital less likely
- 89% said TEC had reduced carer stress

248 High & Immediate Res Care Admissions Delayed

931 Carers Assessed At High Risk Of Carer Breakdown Supported

818 People Where Additional Community Care Avoided

828 Discharges Supported



Lessons Learnt



Involve Senior Finance Colleagues



Embed TEC Use In Normal Care Planning & Workflows As Far As Possible



Embed Savings & Outcomes Calculations In Normal Workflows



Focus TEC Where It Improves Outcomes & Efficiencies To Build Confidence For Future Investment



'TEC First' & The Prevention Triangle

