



# Care & Wellbeing Embedding Technology Enabled Care

Alexis Chappell

Strategic Director of Adult Care and Wellbeing



**Sheffield**  
City Council  
Plan 2024-28

**Together we get  
things done**



# Our Vision

*Everyone in Sheffield lives in a place they can call home, in communities that care, doing things that matter to them, celebrated for who they are — and when they need it, they receive care and support that prioritises independence, choice, and recovery.*



# What Did We Do? - Our Delivery Model and Commitments to People

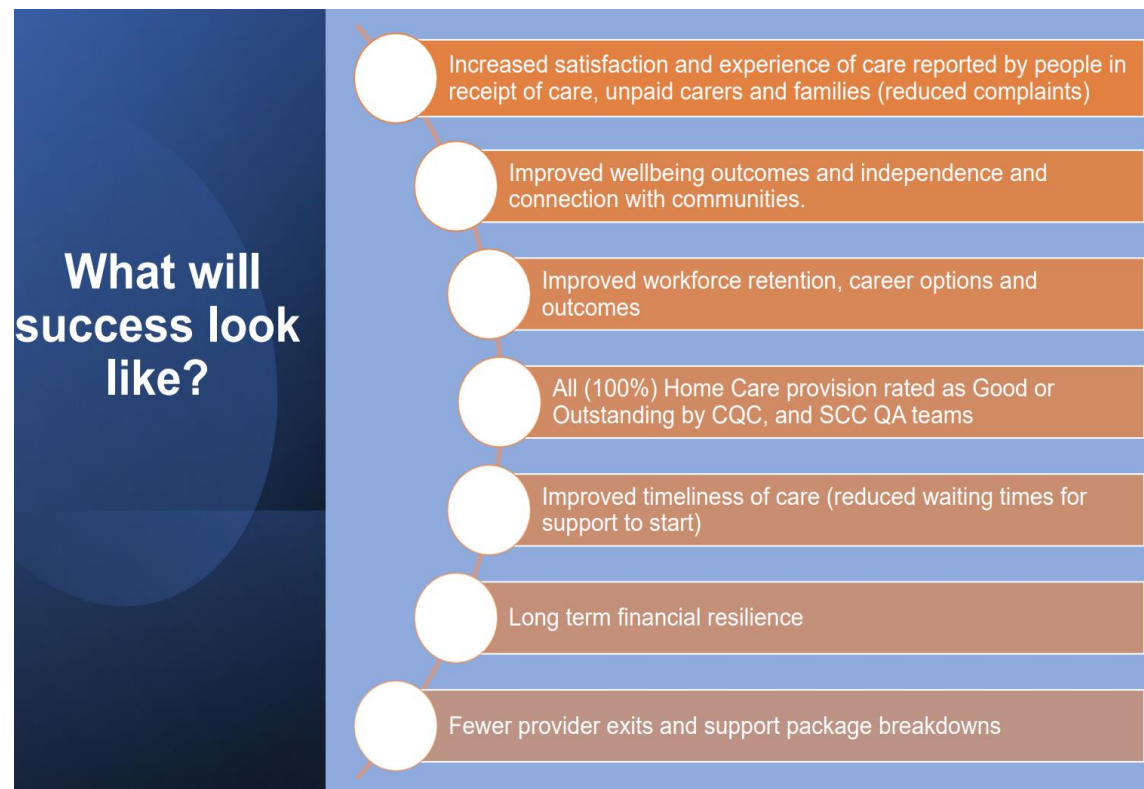


Our Commitments to Individuals, Carers and Workforce are to: -

- Support you to live a fulfilling life at home, connected to the community and resources around you, and provide care and support where needed.
- Provide temporary assistance to help you regain some stability and control in your life following ill health or crisis
- Provide care and support with accommodation where this is needed in a safe and supportive environment that can be called home.
- Make sure support is led by 'what matters to you', with helpful information and easier to understand steps.
- Recognise and value unpaid carers and the social care workforce and the contribution they make to our city
- Make sure there is a good choice of affordable care and support available, with a focus on your experiences and improving quality



# Spotlight on Care & Wellbeing



- Shift from time & task to outcomes led.
- Stability of and investment in our care workforce.
- Embedded technology as core to delivery. Empowering providers recognising their expertise.

# Next Steps & Questions

