

IoT Solutions

within health & social care



AVERIO

we are care first in a digital world



With Matthew Bailey

Co-Founder & Chief Technology Officer

Over 15 years' experience in Adult Health & Social Care



IoT Sensors

- What's their role in health & social care?
- How they can be used?
- Do they improve outcomes?
- Are they cost effective?
- Is the technology easy to adopt?



we are care first in a digital world

AVERio Integrated Care



Helps keep people safe

Identifies Changes

Evidence Based Decision Support

Enables care teams to deliver better
more person-centred care



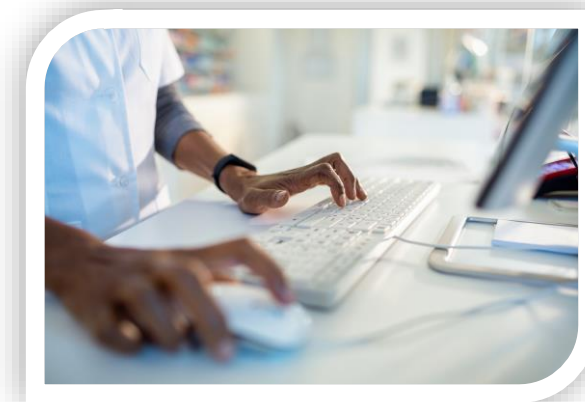
Without real-time data problems may only be discovered at:

The next care visit

The next round of shift checks

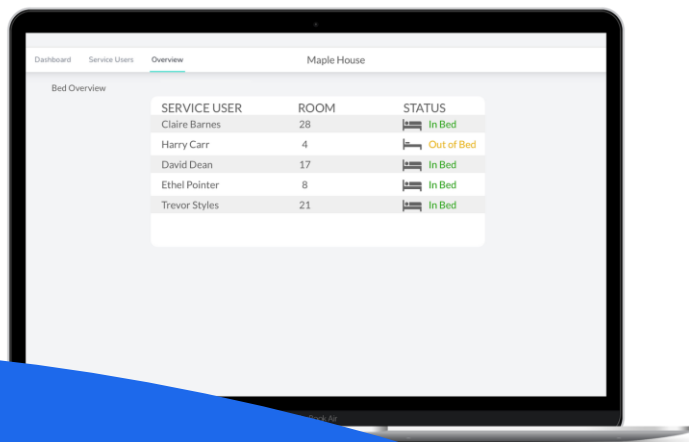
When a family or friends calls

When a specific incident occurs



we are care first in a digital world

For example, the AVERio platform can raise alerts:



When a front door is opened late at night

When a fall occurs

When a room temperature drops below a certain level

When a person gets out of bed

Plus, many more



we are care first in a digital world



What are the other benefits?

Automatic **daily reassurance messages** to family members:

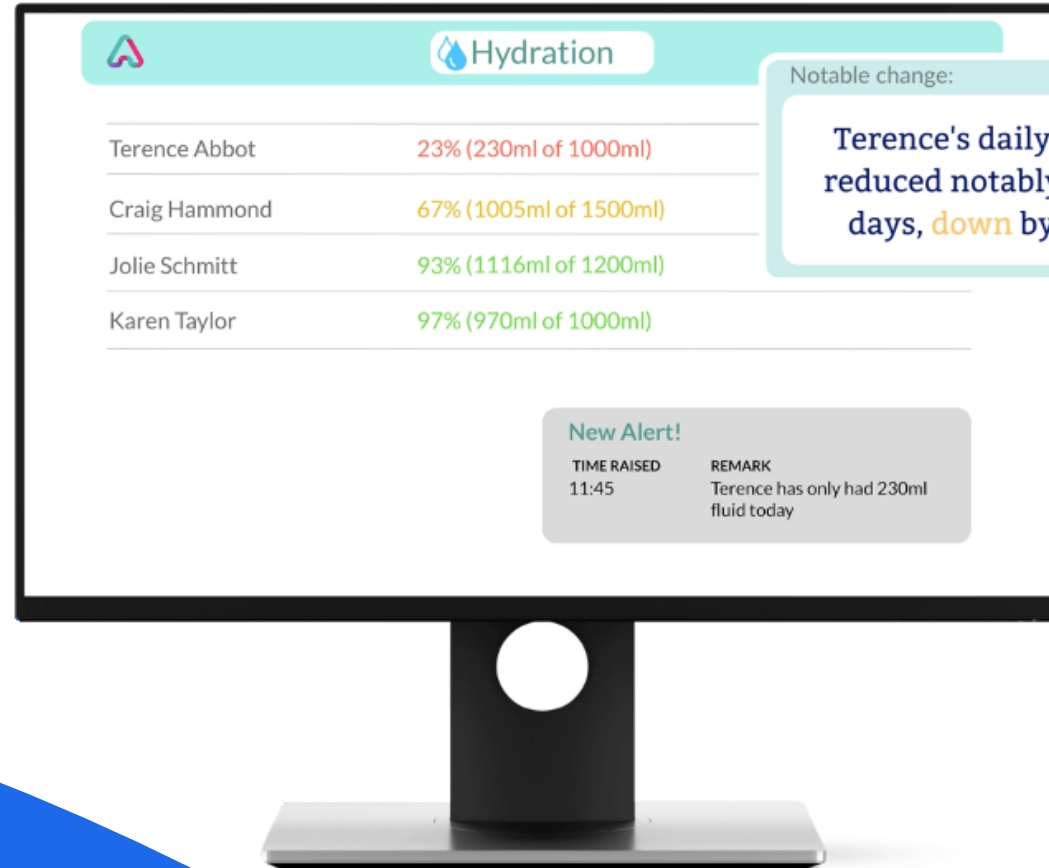
“Mum is up and has put the kettle on”

“Dad has switched on the TV and is sat in his chair”



we are care first in a digital world

Identify Changes Sooner



- Spot changes sooner
- Adjust care plans accordingly
- Evidence based decision support
- More appropriate, person-centred care



we are care first in a digital world

Benefits for the care team and wider care circle

Helps reduce the burden to busy care teams

Aids the focus of resources to priority areas

Technology that is proven to minimise the impact of incidents

Can help to prevent incidents altogether



Step-up/Step-down Personalisation

Sensors can easily be added or removed as care needs change

If a sensor is no longer required, it can be re-provisioned to another resident

No additional fees to re-provision sensors

Flexibility helps reduce the need to repurchase additional sensors



we are care first in a digital world

Interoperability is key

Suppliers should promote an **open integration** mindset

IoT platforms should offer **native**, well **documented** and well **supported** API functionality

This approach **improves adoption** and removes change barriers



we are care first in a digital world



Why **invest** in this technology?

2025 switch off will render many antiquated systems **redundant**

Legitimate need to switch to newer, more affordable **digital** solutions

Modern systems extend beyond simple nurse-call solutions providing **data-led**
insights



we are care first in a digital world



Access to IoT Data Enables:

Evidence based decision support

Burden reduction for **busy** care teams

Improvement in **safety**

Reduction in costs

Minimises the impact of incidents

Helps to keep people **out** of hospital

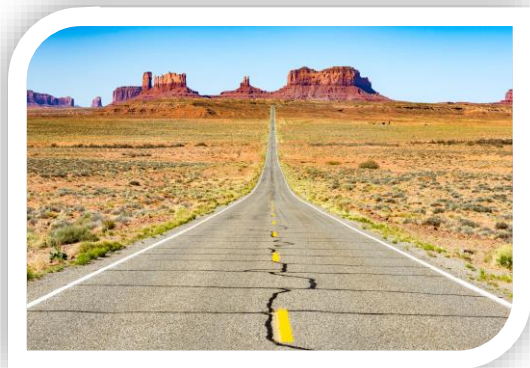
Promotes **independence**

Enables more **person-centred** care



AVERIO

we are care first in a digital world



Health & social care is on a **transformational journey together**

Care organisations, hospitals and local authorities can join our **FREE partner programme**:

Evaluate the **latest IoT tech** in your organisation

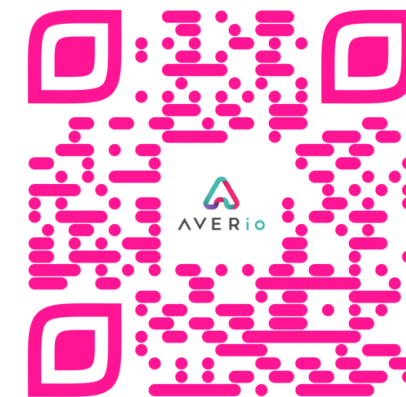
Run a **free small-scale pilot** to prove it works for your use case

Get **early access** to new product features before general release

Provide feedback and be **part of the journey** in shaping future IoT solutions

<https://AVERio.co.uk/partner-programme>

Limited spaces left



AVERio

we are care first in a digital world



Thank you for listening

I'd be happy to take any questions.

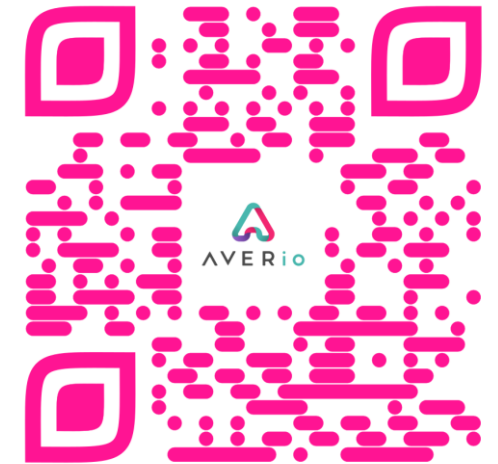
AVERio.co.uk

0161 552 4224

business@averio.co.uk

<https://AVERio.co.uk/partner-programme>

Limited spaces left



Matthew Bailey
Co-Founder & Chief Technology Officer



we are care first in a digital world