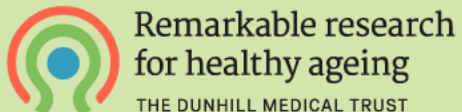




TAPPI2: from Principles to Implementation

Nathan Downing
Director of Membership & Consultancy Services
TSA

www.housinglin.org.uk/TAPPI2



#TAPPI



TAPPI2: from Principles to Implementation

OBJECTIVES

- Test 10 TAPPI principles in locality 'testbeds'
- Gather the evidence of what is possible
- Challenge what is perceived to be impossible
- Co-produce a 'TAPPI Framework'



<https://www.housinglin.org.uk/Topics/browse/Design-building/tappi/>



Housing LIN

Connecting people, ideas and resources



The voice of technology
enabled care

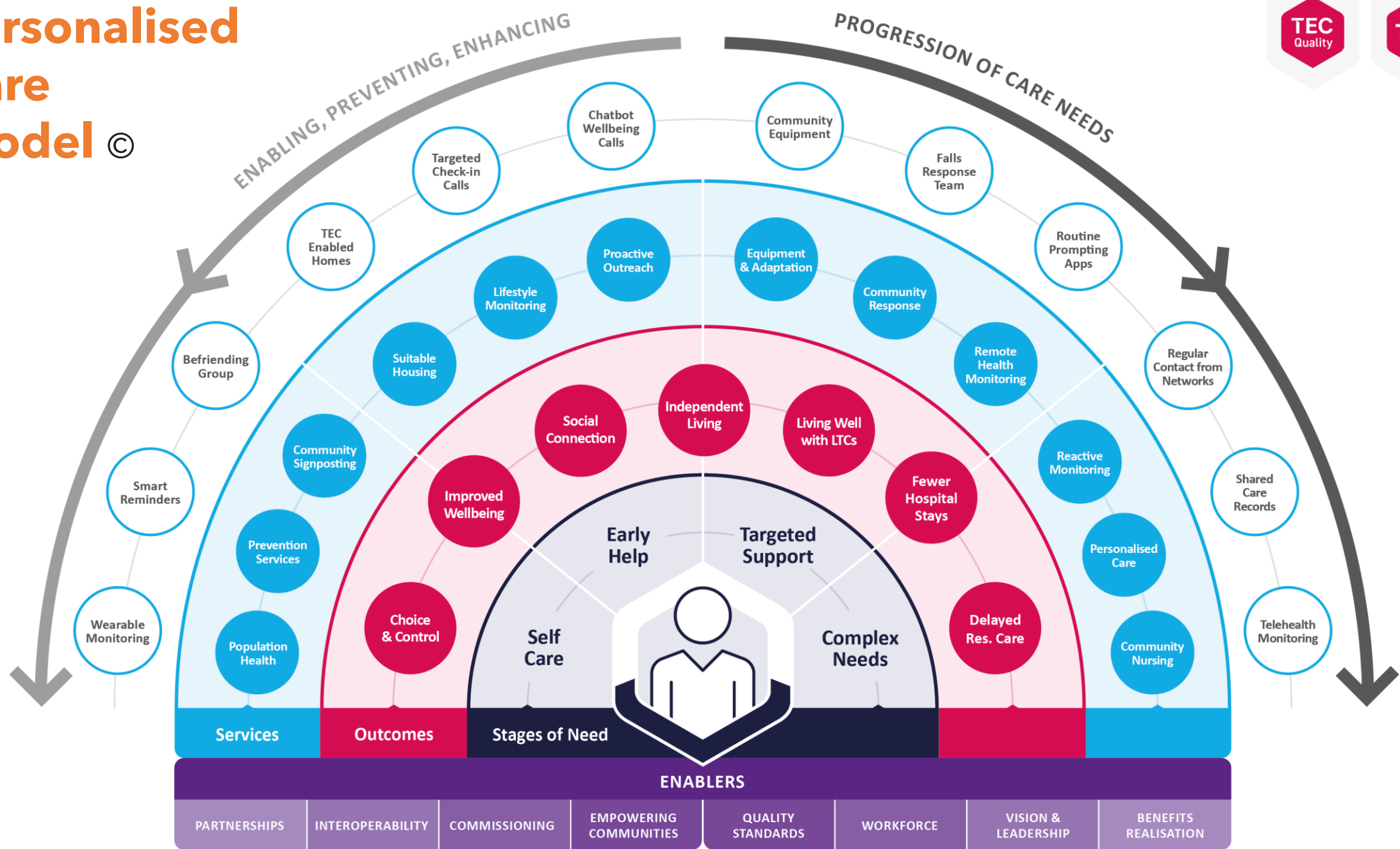


Remarkable research
for healthy ageing

THE DUNHILL MEDICAL TRUST

#TAPPI

Personalised Care Model ©



Personalisation in ACTION



Co-production

Technology enabled services need to be proactive and co-produced with people, their families and carers.



Workforce, vision and leadership

Digital infrastructure, skills and approaches in social care must improve so individuals and the care workforce can maximise digital opportunities.



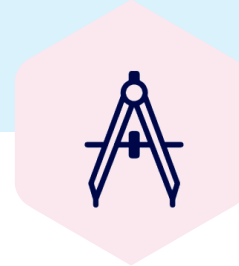
Standards

We should work with technology providers and other adult social care stakeholders to drive the adoption of quality standards.



Evidence evaluation and benefits realisation

Wellbeing and cost benefits continuously collated



Creation of the blueprint

What good looks like

Hands on Support in the community

Delivery of a Personalised Care Innovation Programme

Tappi Framework

CO-PRODUCTION WORKS

Cambridge Centre for Housing & Planning Research

TAPPI2: introducing six demonstrator sites



#TAPPI
[TAPPI2 Further Info](#)

TSATM

Thank you