



Department
of Health &
Social Care

Adult Social Care Housing Reform

Mark Browne – Head of Housing & New Models of Care, Social Care Group

mark.browne@dhsc.gov.uk

28th September 2022

In December 2021, we published the white paper 'People at the Heart of Care'

In September 2021, the government announced an additional £5.4bn over three years, of which **£1.7bn will begin major improvements across the adult social care system in England**. We undertook extensive engagement to develop and shape this white paper.

The white paper sets out our 10-year vision for person-centred care. It puts **personalised care at the core** of this vision, which is underpinned by three main principles:



People have choice, control, and support to live independent lives

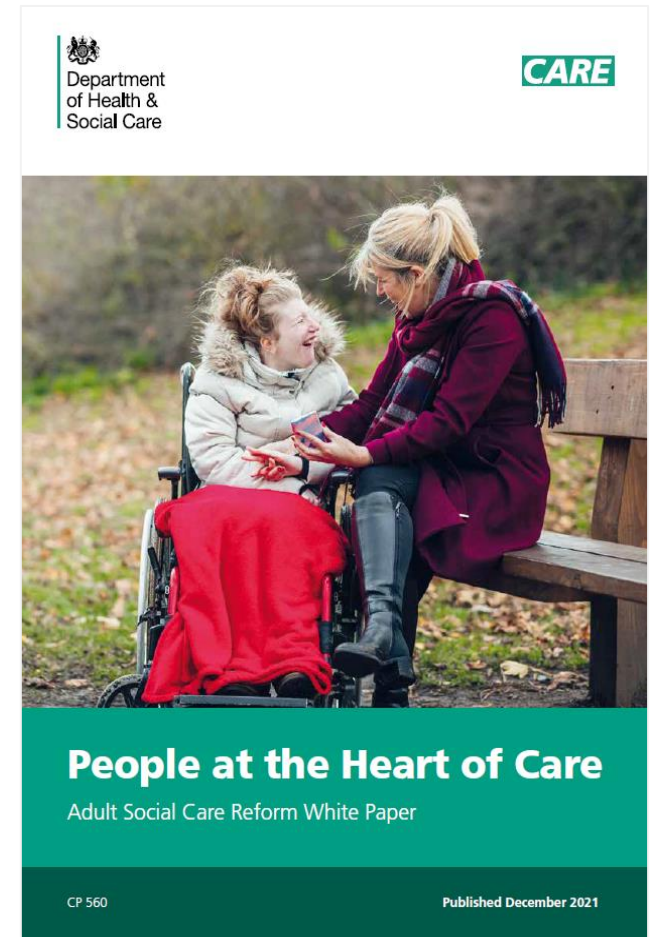


People can access outstanding quality and tailored care and support

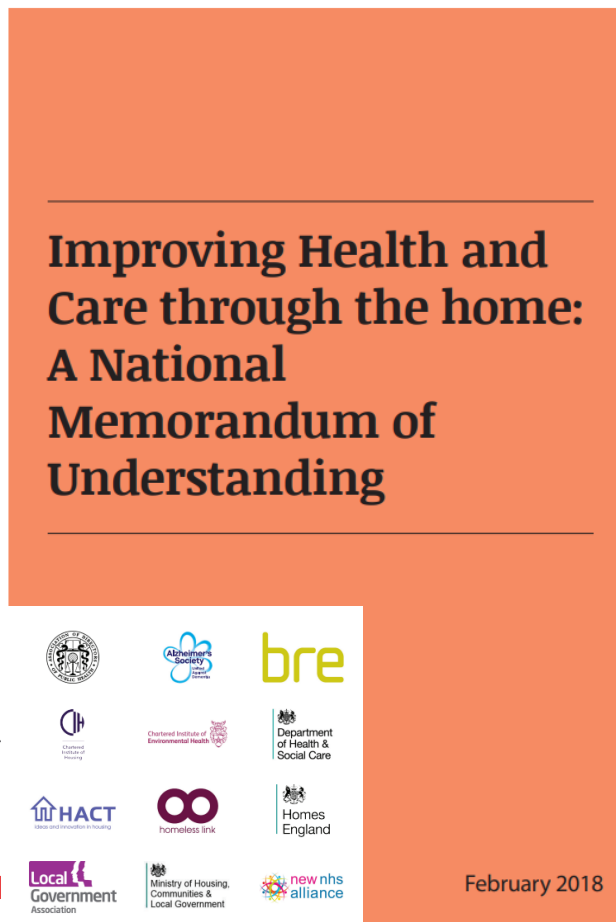
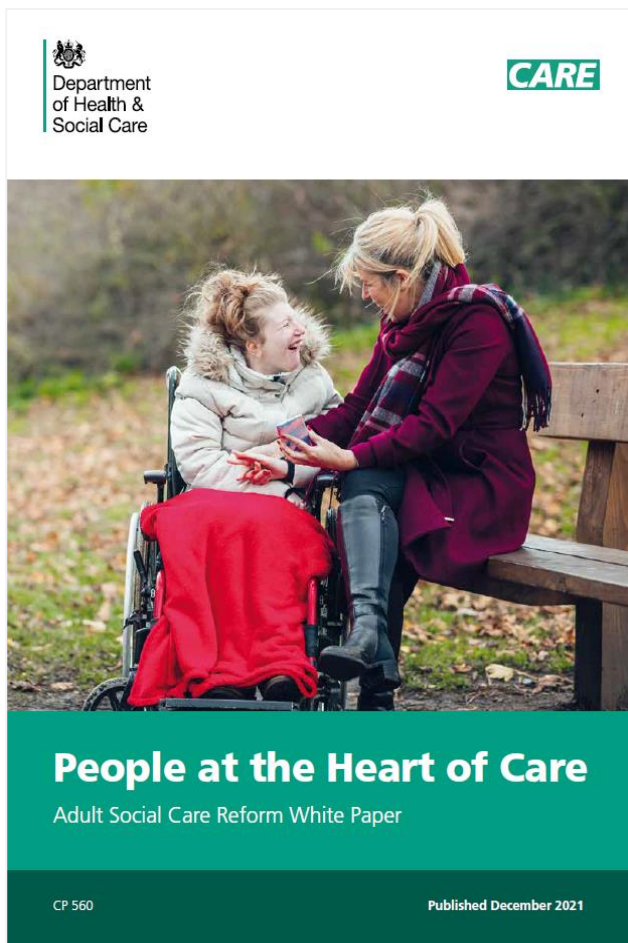


People find adult social care fair and accessible

- Within each of these principles are a **series of 'I statements'** that describe what our 10-year vision should feel like for people who interact with the social care system.
- The 10-year vision will serve as a **framework for future spending decisions** and fiscal events.



A strong shared ambition for housing



The White Paper commitments fit into several "pillars" of reform:

Workforce (£500m)	Housing (£300m)	Technology and digitisation (£150m)
<ul style="list-style-type: none"> • Portable Care Certificate • Digital Hub • Digital Passport for Skills • Learning & Development Offer • Continuing Professional Development for Registered Professionals • Social Work Training • Registered Managers support • Wellbeing • Volunteering 	<ul style="list-style-type: none"> • Integrate housing into local health and care strategies • Increase the number of adults (of all ages) living in housing with care & support • Actively shape market for, and increase the supply of, supported housing 	<ul style="list-style-type: none"> • Digitisation – digital social care records • Adoption of care technology including falls prevention tech • Connectivity in care homes • Cyber and data security • Digital skills for the care workforce
	<p data-bbox="519 839 1238 931">Data, assurance and improvement</p> <ul style="list-style-type: none"> • Care Quality Commission Local Authority Assessment Framework • Adult Social Care Outcomes Framework (ASCOF) update and Data Framework published • Improvement Offer 	<p data-bbox="1245 839 2023 931">Innovation & Scaling [Models of care, Info & advice, Unpaid Carers]</p> <ul style="list-style-type: none"> • Support local authorities to embed and scale-up innovation • Kick-start a change in the services provided to support unpaid carers • Trial new ways to provide people with personalised ASC advice

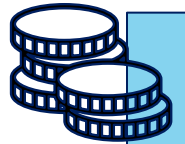
Housing Transformation Fund – our design thinking



Local Partnerships are the foundation for delivery

An ambition for every place to have a **jointly-owned local strategy**, based on evidence of need and supply

Local Partnerships based around the **geographic footprint** that works best for **that** place



Funding available to **accelerate or scale-up** delivery of those local strategies

Funding as revenue **for care & support** (but with flexibility). Not capital for construction.

Using this Funding to **leverage other sources of investment**



A comprehensive and front-leaning **support offer** from DHSC and expert partners

Collecting and sharing the **evidence of impact** (for people!) and in shaping local markets

A “**prospectus**” setting out how funding can be used, priorities for the fund, and full information for local places



Housing Transformation Fund - our proposition

Local Partnerships can access two funding streams – ***open at any time***

Strategy & Partnership Funding

To develop local partnerships, evidence and strategy – or strengthen & refresh existing work.

Local Places can describe:

- Strategy & partnership in place
- Long-term investment strategy is in place
- Impact local place expects to deliver
- How local place will leverage additional investment
- Plans for sustainability
- Planned evaluation

Investment Funding

To deliver local change – to accelerate or scale up the delivery of local strategies - supporting more people; testing innovative models

NB - we are ***not*** proposing that the investment is used to directly fund construction of new supported housing.



October - December

- Dialogue with local places and partners to:
 - Raise awareness of the Fund
 - Co-design the finer detail of delivery
 - Develop and agree our prospectus
- Behind the scenes work to put the delivery architecture and support offer in place.

January - March

- Support offer becomes available
- Prospectus (and all the detail of the Fund) available
- Open dialogue with places to support development of early bids

FY 23/24

- Fund in full operation
- Ongoing, full support offer
- Rolling process for making “Investment Funding” grants



Department
of Health &
Social Care

Adult Social Care Housing Reform

Mark Browne – Head of Housing & New Models of Care, Social Care Group

mark.browne@dhsc.gov.uk

28th September 2022