

The Great North Care Record

11th November 2021



Healthcare at its best
with people at our heart

Introductions

Lisa Sewell

**Head of Digital Innovation & Delivery – Newcastle Hospitals
Programme Director – Great North Care Record**

Jill Watson

Project Manager – GNCR Health Information Exchange (HIE)

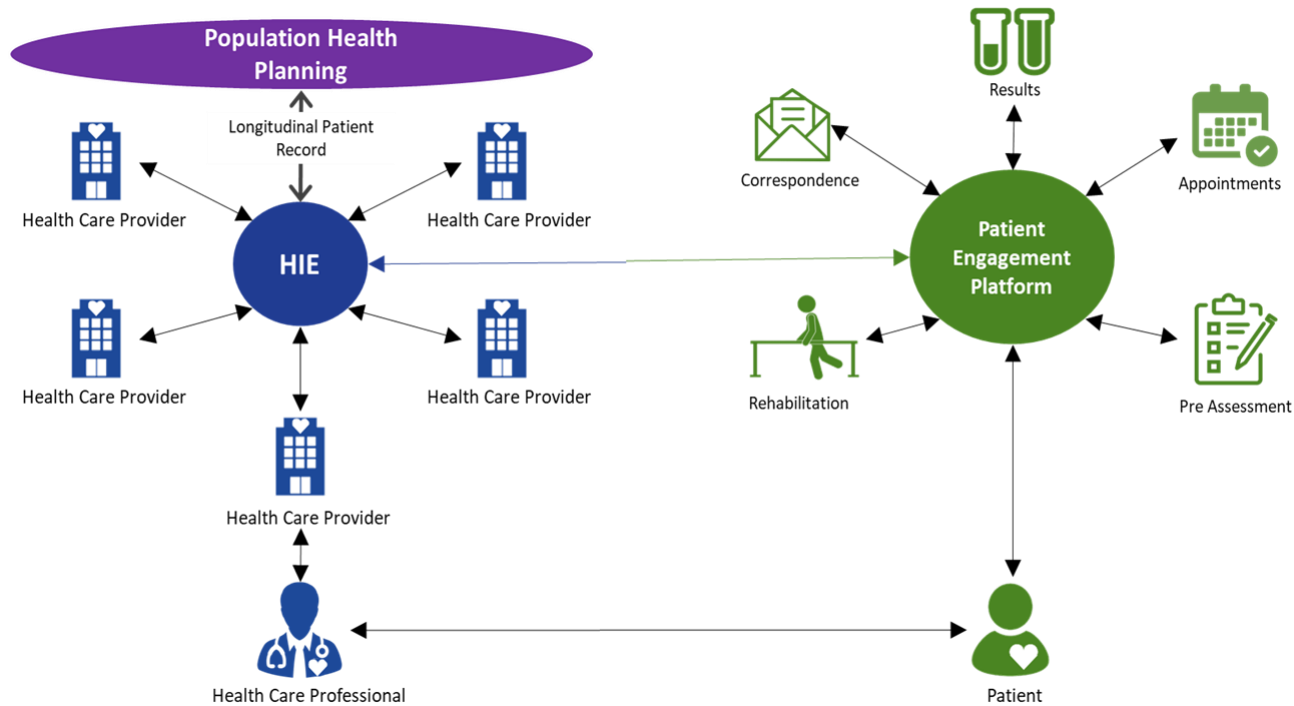
Stephen Foreman

Informatics Manager – Newcastle City Council

Steph Downey

Service Director Adult Social Care – Gateshead Council

The Vision



Who is involved?



Population of 3.2M



2 mental health trusts
(TEWV and CNTW)



All 8 hospital trusts



North East Ambulance Service



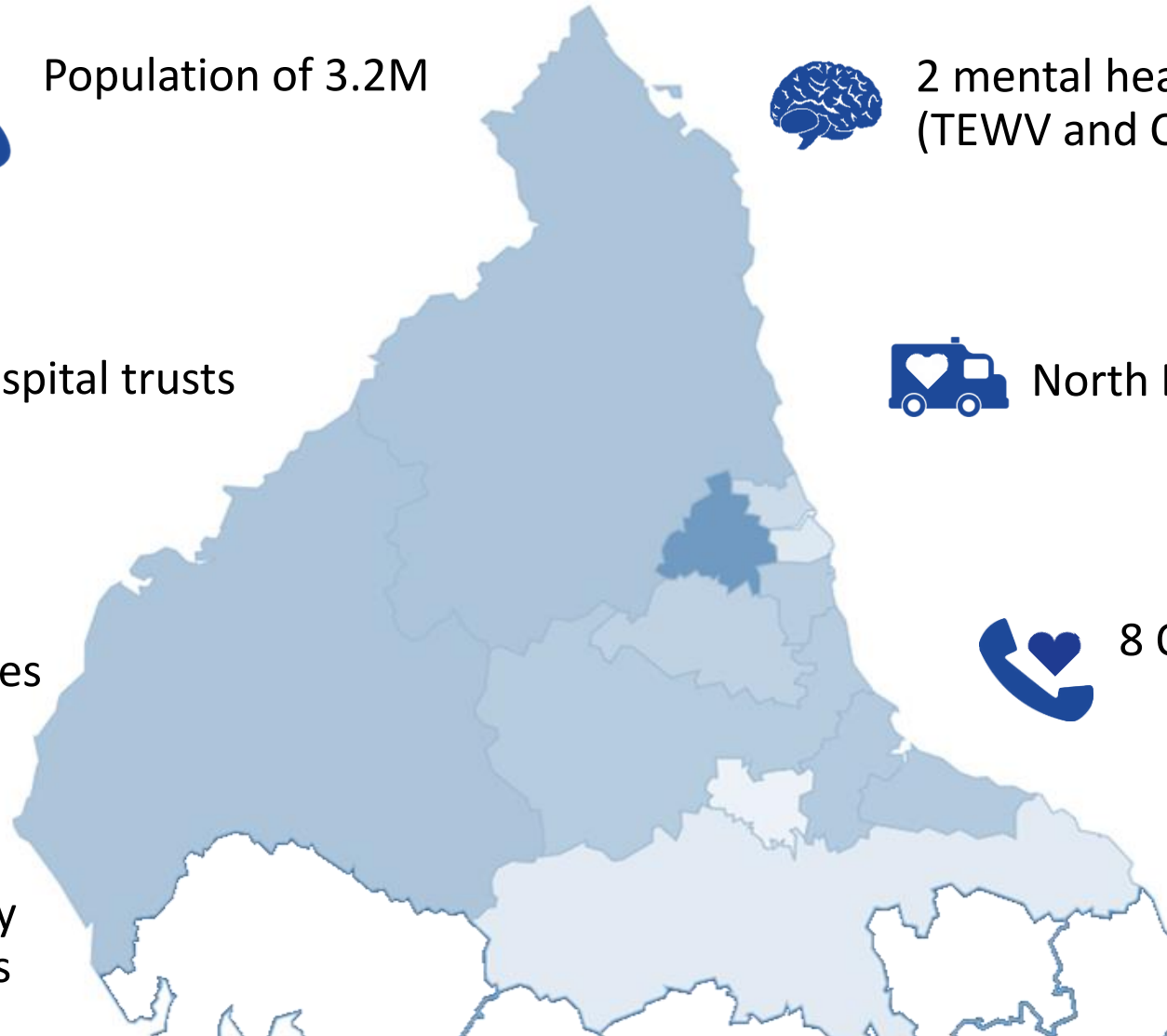
All 8 CCGs
400+ GP Practices



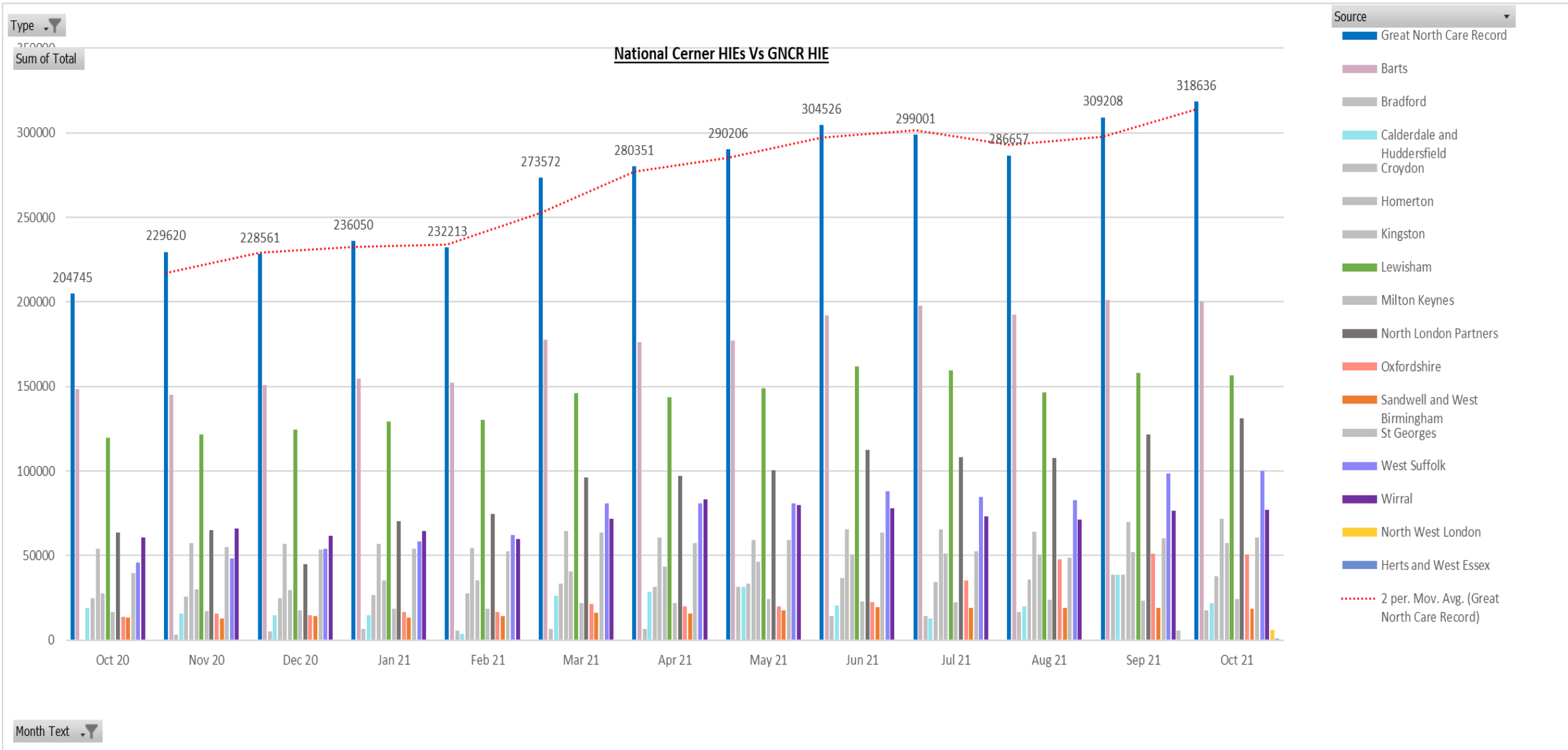
8 Out of Hours services



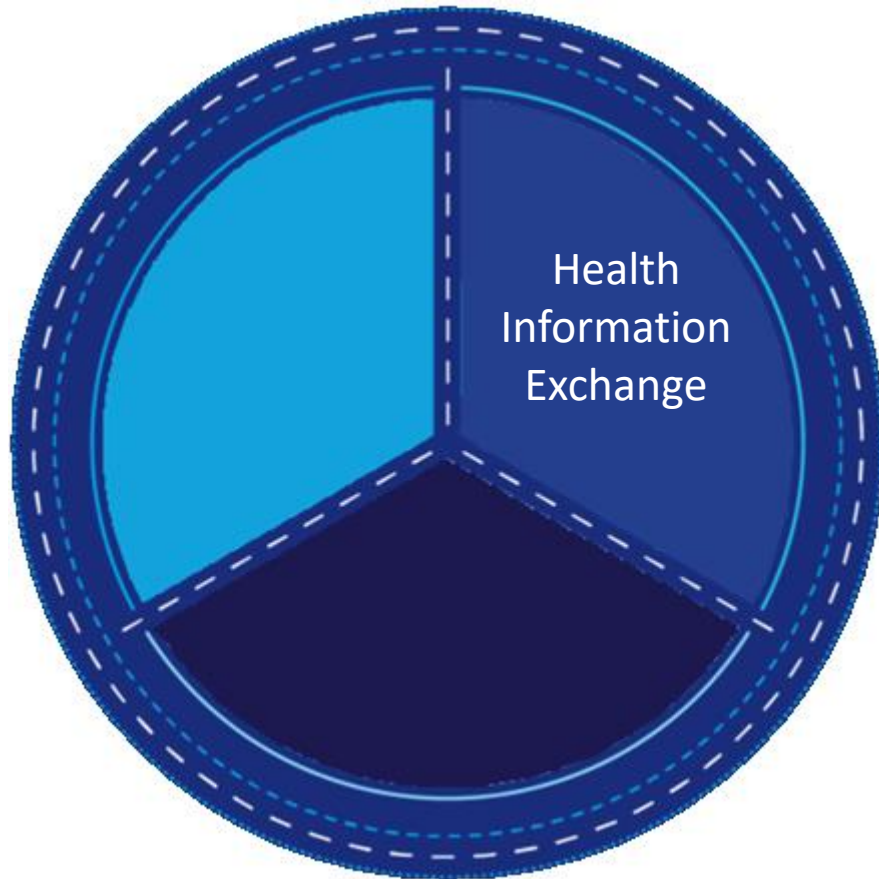
All 13 local authority
social care providers



NENC National Position



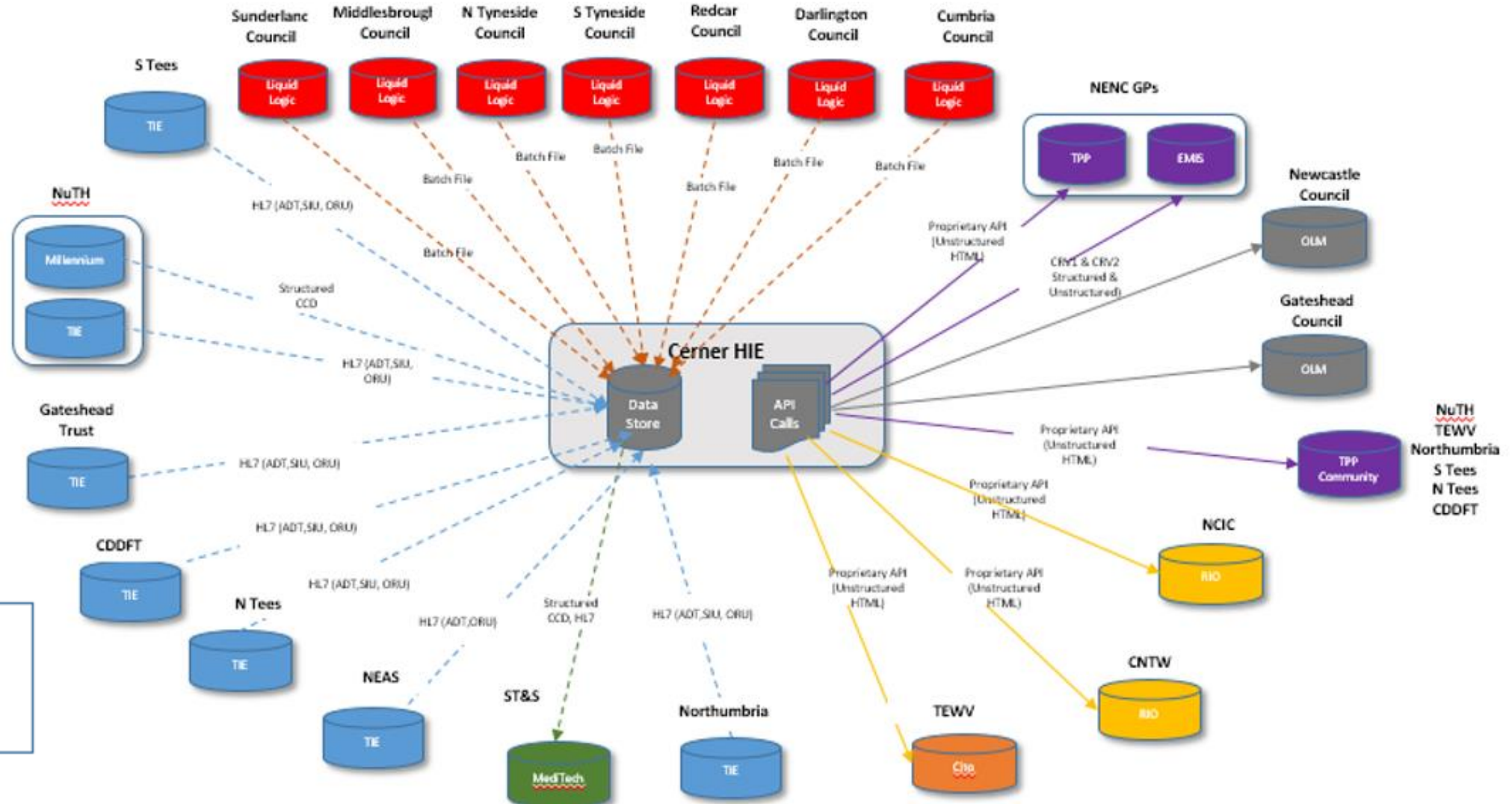
Health Information Exchange



1. Professionals and Carers

Professionals and carers to have legitimate access to the right information at the point of need, ensuring our population get better, safer care regardless of setting or organisation.

Health Information Exchange – Interoperability



Health Information Exchange (HIE) Delivery so far.....

- 100% of primary care data is being shared
- Covering 3.2 million patients from over 400 GP practices.
- Trusts Contributing Data to the HIE
 - The Newcastle Upon Tyne Hospitals NHS Foundation Trust
 - Cumbria, Northumberland, Tyne And Wear NHS Foundation Trust
 - South Tyneside & Sunderland NHS Foundation Trust
 - North East Ambulance Service NHS Foundation Trust
 - Gateshead Health NHS Foundation Trust
 - County Durham And Darlington NHS Foundation Trust
 - North Tees And Hartlepool NHS Foundation Trust
 - North Cumbria Integrated Care NHS Foundation Trust
- Over 200 Community Units are sharing data
- Sunderland City Council are sharing data



What Types of Information can you see in the HIE?

GP & Community Data

- Patient Demographics
- Summary
- Problems
- Examinations
- Investigations
- Medications
- Diagnosis
- Risk & Warnings
- Events
- Procedures

North East Ambulance Service Data

- Crew Reports

Secondary Care Data

- Patient Demographics
- Allergies
- Correspondence
- Visits & Encounters
- Problems & Diagnosis
- Procedures
- Appointments
- Radiology, Microbiology, Pathology and Lab Results

Mental Health Data

- Patient Demographics
- Referrals
- Progress Notes
- Appointments
- Events
- Risks & Alerts
- Allergies
- Mental Health Act Status
- CPA
- Inpatient Events
- Care Plans

Adult Social Care Data

- Patient Demographics
- Risks & Warnings
- Events
- Referrals
- Care Plans
- Safeguarding
- Service Provision
- Classification
- Disabilities
- Practitioner Involvement

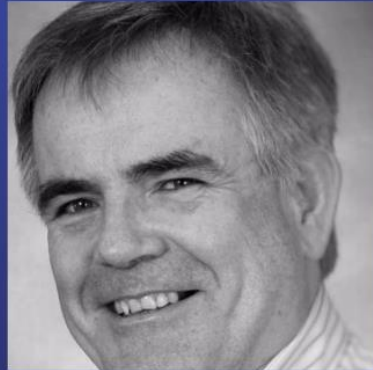


Feedback from our Users

“

“Having access to more information about the patients we care for, means we can have better conversations with our patients, rather than just getting them to repeat the same information over and again.”

”



North Tyneside GP
Dr Mark Westwood



“It makes a **real difference every day** to the patients I treat. I can instantly access **vital medical information** such as medications, so I can treat people quickly and effectively.”

Dr Phil Stamp, Emergency Consultant at Northumbria Healthcare NHS Foundation Trust

Feedback from our Patients & Citizens

This exciting project captures the very essence of digital engagement with personal health records

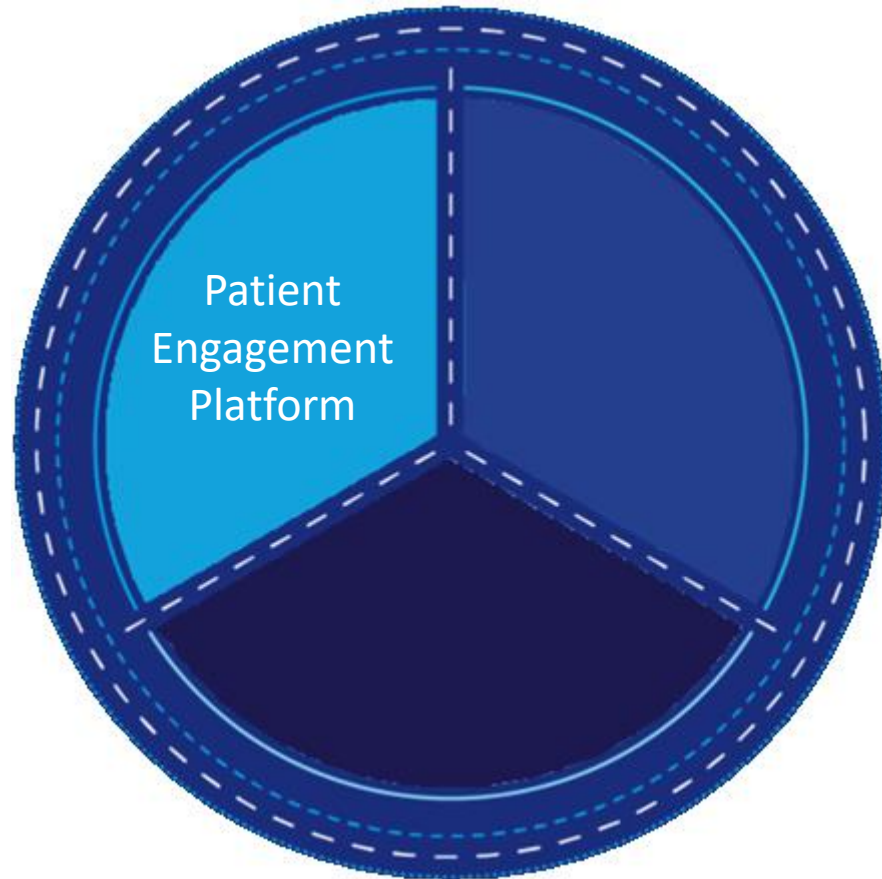
“This is an opportunity, necessity and a public empowerment exercise for us - all in one”

I have downloaded the NHS app to renew my prescriptions. I look forward to increasing its scope.

The key appeal for me here is ... rapid access to my own health data - that could dramatically improve access to so much health care

“The Great North Care Record is innovative ... and patients will benefit enormously from access to the services that the NHS offers.”

Patient Engagement Platform



2. Individuals

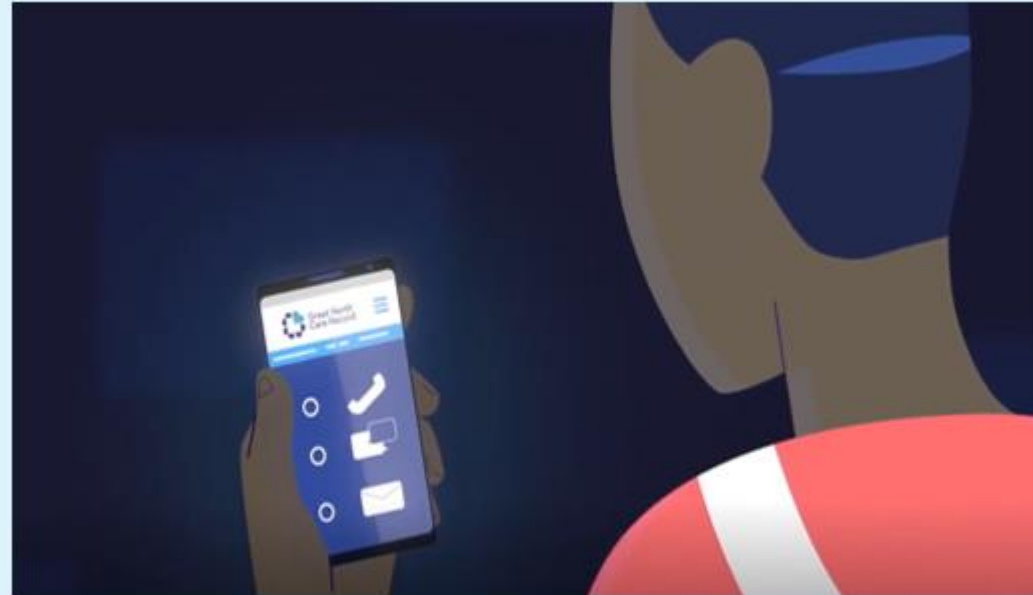
Individuals to have improved access to information, allowing them to better understand and manage their own wellbeing and care.



Coming Soon.....

Patient Engagement Platform – What is it?

A secure platform allowing patients to control aspects of their care, to access their own records, and to enhance the experience for individuals and providers alike.



Patient Engagement Platform – Integration with NHS App

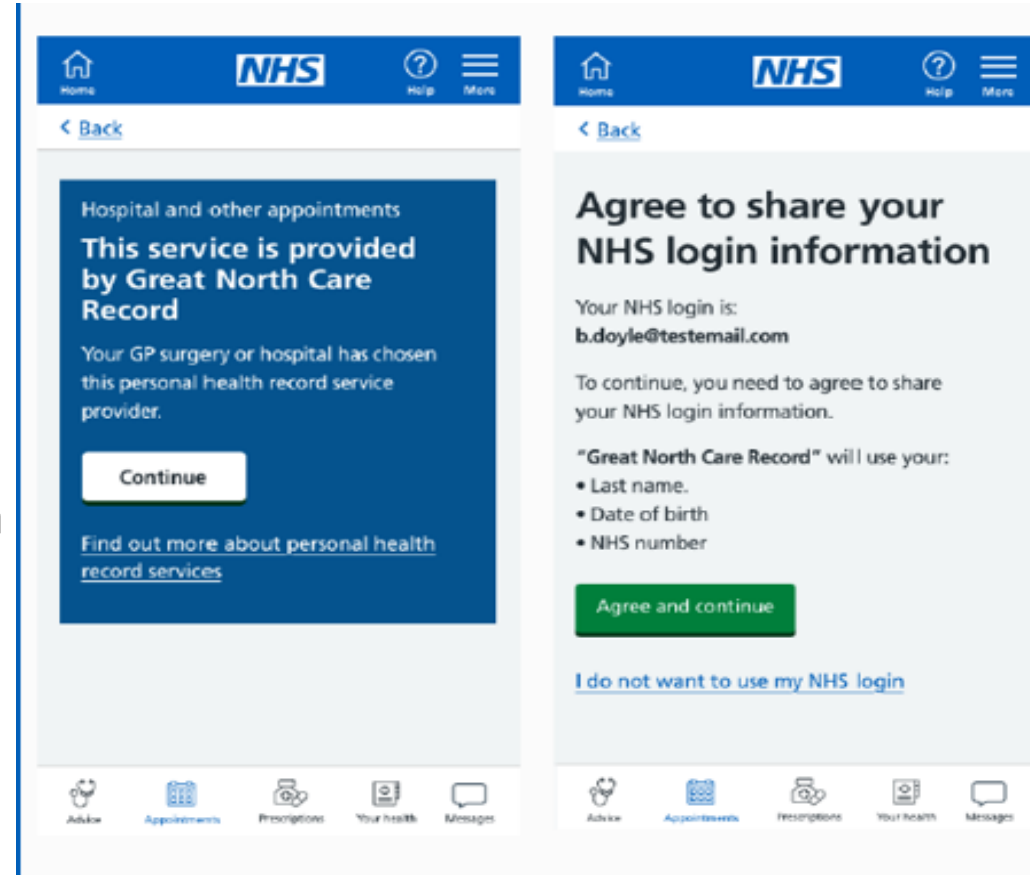
Integration within the NHS App to allow patients a single “digital front door” to access secondary care services

Authentication for access to Great North Care Record is handled by NHS Login giving patients surety that this is handled securely and safely

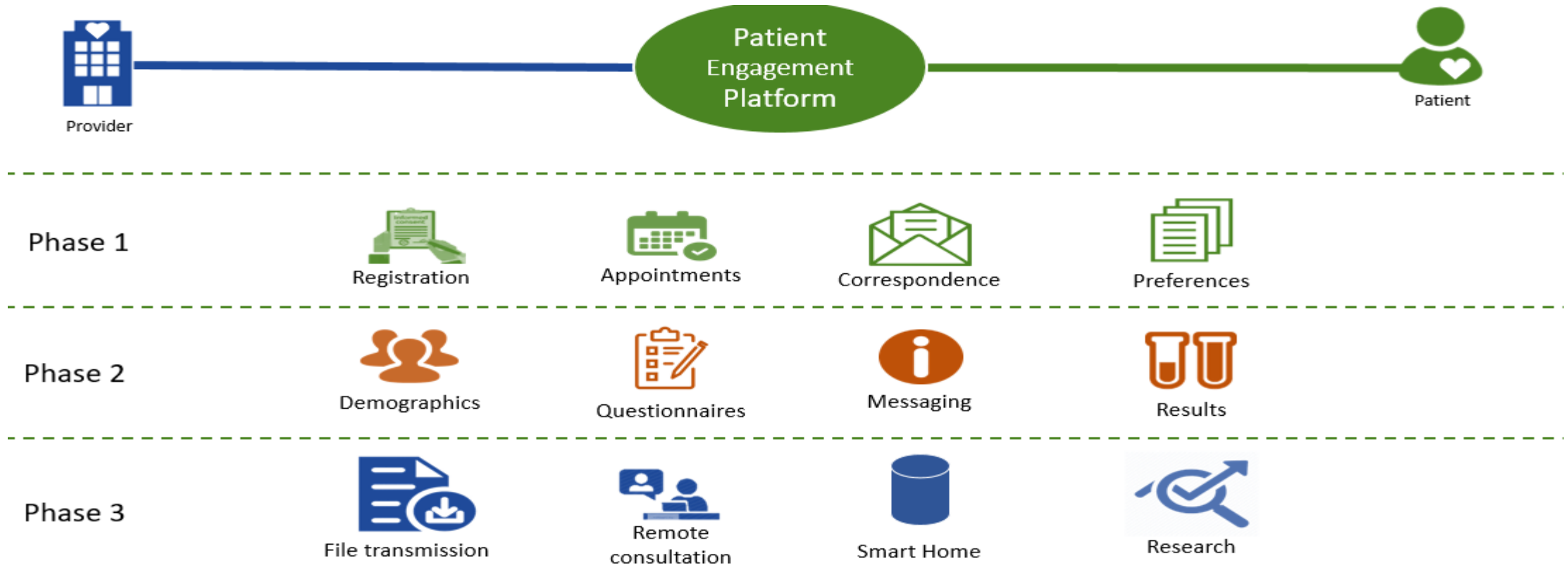
Accessibility standards meet those of NHS App and design language and colour is replicated for consistency

“With the NHS App I can order repeat prescriptions to help manage my condition.”

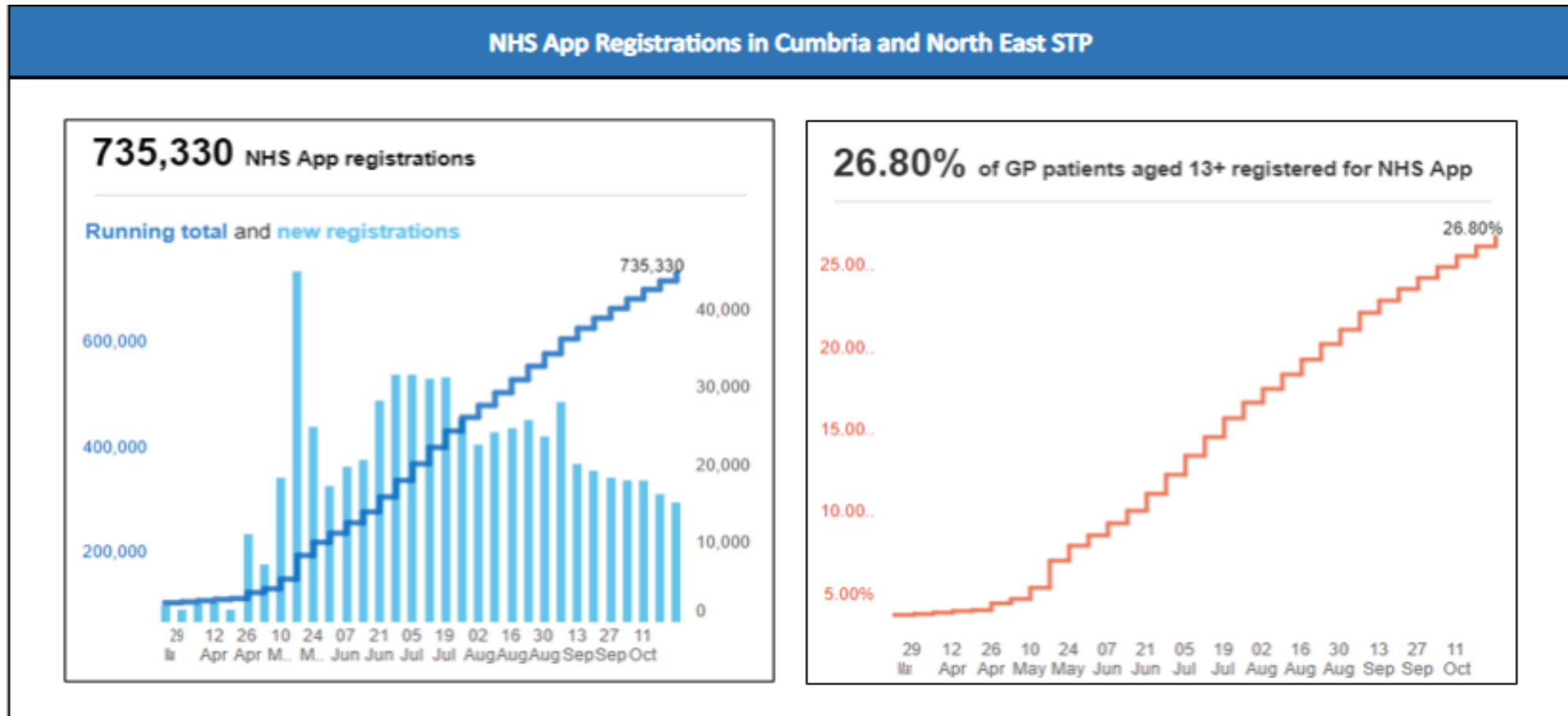
“I use the NHS App to book my GP surgery appointments and order repeat prescriptions to help manage my condition.”



Patient Engagement Platform – Roadmap



NHS App Registrations in North East and Cumbria STP



HSJ AWARDS 2021

The GNCR has been shortlisted for:-

- Connecting Services and Information Award
- Provider Collaboration of the Year categories

Winners are due to be announced 18th November 2021

THANK YOU



Questions and Feedback