



Tunstall

Person Centric Proactive
Care Technology

Angus Honeysett,
Head of Market Access

John Murray
Business Development Director

18th November 2021

TSA/ADASS Commission

Tunstall support the recommendations made in the commission, and through partnership working and collaboration are helping to drive digital inclusion and data accessibility as health and social care integrate.

Technology enabled services need to be proactive and co-produced with people, their families and carers.

ENABLING WORKFORCES TO MAKE EFFICIENT AND EFFECTIVE USE OF TECHNOLOGY AND DATA to improve outcomes for people families and carers

NEED FOR
SOCIAL CARE
IS RISING:

1.9m
new requests



for social care support received
by councils in 2019-20

5m
people



juggling caring responsibilities
with work and family life

THE BENEFITS OF USING TECHNOLOGY IN SOCIAL CARE:

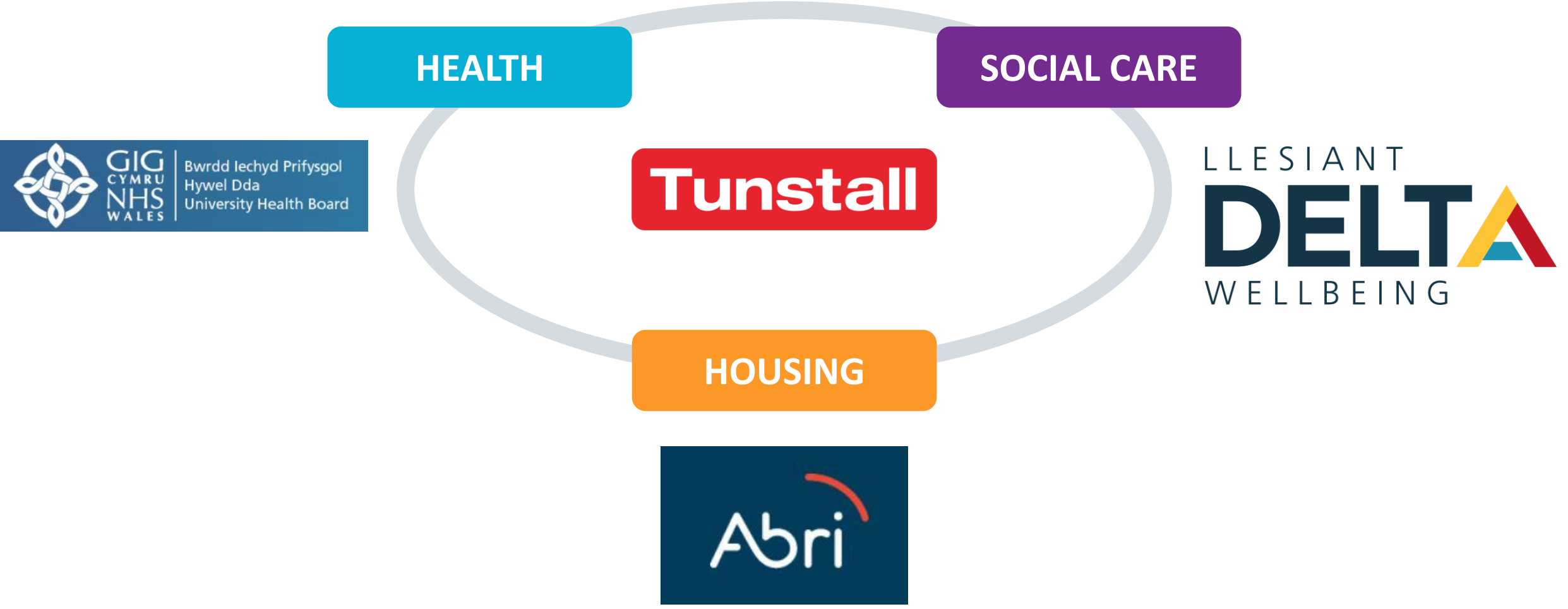


76% of social care providers say that using technology leads to better outcomes for individuals

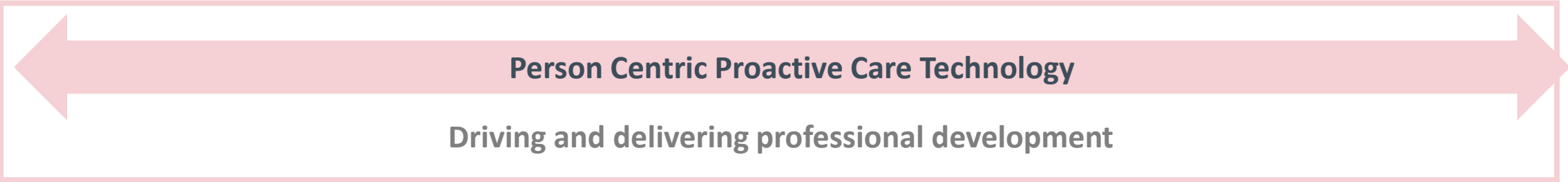
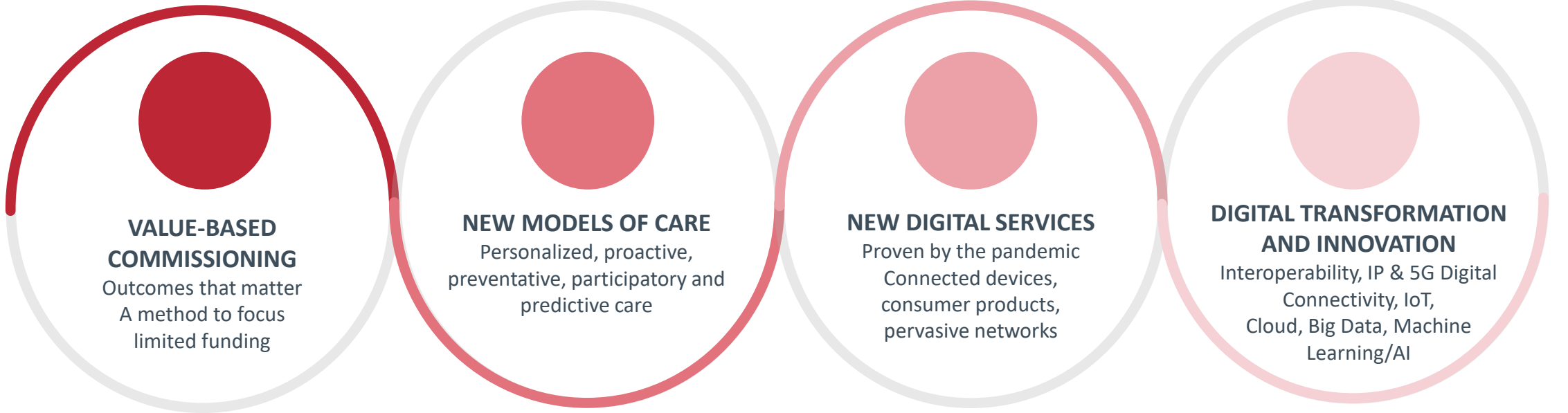


66% said assistive technology frees up staff time to offer more meaningful support

Partnership working and collaboration



Driving Health and Care Transformation



Digital Inclusion and Transformation



Take a consultative approach – working together to understand your challenges, designing the best digital future-proofed solutions in partnerships



Whilst there are challenges to overcome, maintaining or adapting your existing solutions where possible is both economical and the right thing to do



Our objective is to work with you to provide digital solutions and a digital implementation plan that is tailored, realistic and outcome focussed

Vision for the Future



TECNOLOGY ENABLED CARE



INSIGHT AND COMMUNICATION



ACTIVITY MONITORING



THE FUTURE





Thank you

E: John.Murray@tunstall.com

T: 07925 356804